



Flat 1, 12-14 Cotswold Street

London, SE27 0DW

£1,900 Per Month

A three double bedroom split level flat with two bathrooms. The property boasts 948 sq ft in total square footage and has direct access to the garden. Well presented throughout this property is situated in a fantastic location in the heart of West Norwood within easy reach of an array of local shops, restaurants, and bars as well as being just a 2-minute walk away from West Norwood station and 14 minutes from Tulse Hill station, both giving commuters' flexible access into Central London (distances estimated via google maps).

Council Tax Band D £1660

Viewing

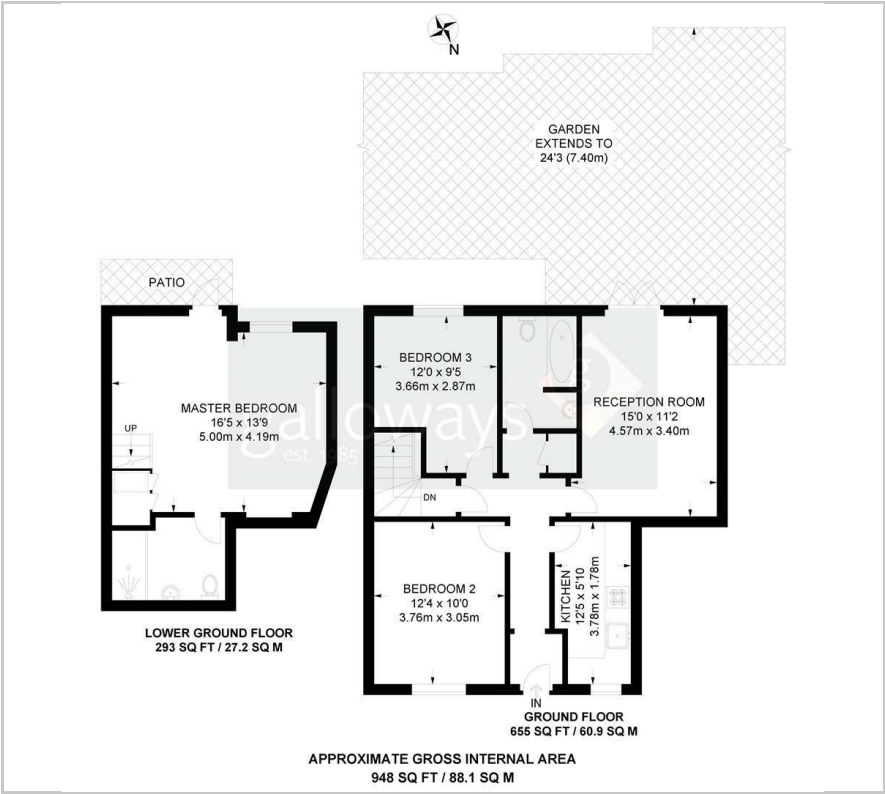
Please contact our Galloways West Norwood Office on 020 8766 6111

if you wish to arrange a viewing appointment for this property or require further information

- THREE DOUBLE BEDROOMS
- TWO BATHROOMS
- GARDEN
- FANTASTIC LOCATION
- AVAILABLE IMMEDIATELY
- UNFURNISHED
- GAS CENTRAL HEATING
- DOUBLE GLAZING
- WELL PRESENTED THROUGHOUT
- CLOSE PROXIMITY TO WEST NORWOOD & TULSE HILL STATION



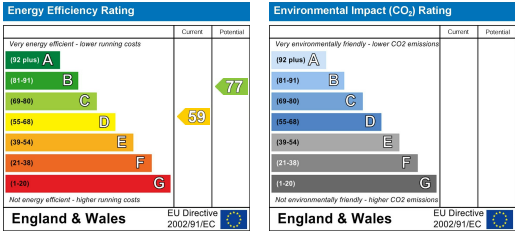
Floor Plan



Area Map



Energy Efficiency Graph



These particulars, whilst believed to be accurate are set out as a general outline only for guidance and do not constitute any part of an offer or contract. Intending purchasers should not rely on them as statements of representation of fact, but must satisfy themselves by inspection or otherwise as to their accuracy. No person in this firms employment has the authority to make or give any representation or warranty in respect of the property.